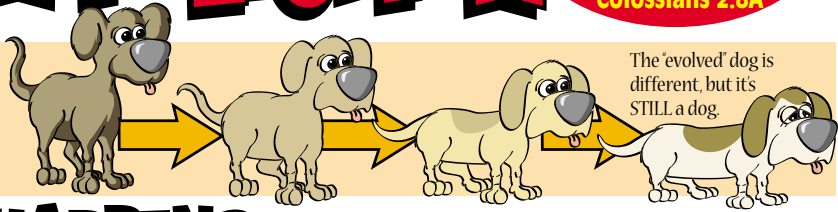


EVOLUTION POLLUTION

See to it that no one takes you captive through hollow and deceptive philosophy...
Colossians 2:8A

WHAT IS EVOLUTION?

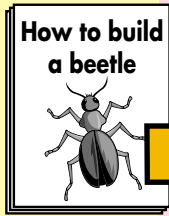
'Evolution' is when a living thing changes a little bit over time. Like if a dog has a puppy who are different than her, and if THAT puppy grows up to have more puppies that are even more different, and if THAT dog had puppies that were even MORE different, you could say that the dog **EVOLVED**. The new dog is **STILL A DOG**, but it's a different **KIND** of dog.



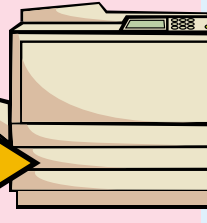
The 'evolved' dog is different, but it's **STILL** a dog.

HOW DOES EVOLUTION HAPPEN? It's Kind of Like a Copy Machine...

All living things have special instructions inside them (called 'genes') which tell how to put them together.

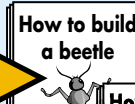


When living things have babies, those special instructions are **COPIED** to the babies, kind of like a copy machine...

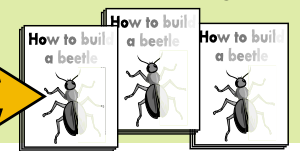


Usually, the copy machine makes a perfect copy of the instructions, and the babies are just like the parents.

But sometimes, the copy machine makes a **MISTAKE**, and a copy comes out that's **NOT AS GOOD** as the original.



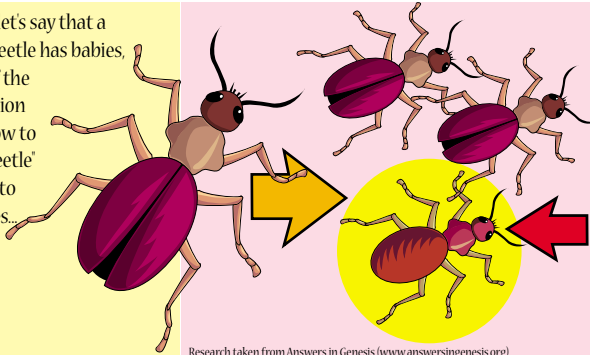
If you make copies of the **MUTANT** copy, all of those copies will look like the **MUTANT**, not like the original.



You might say that this is a **MUTANT**. Something went **WRONG** with the copy. That's called a **MUTATION**.

NATURAL SELECTION Evolution that Really Happens...

To start, let's say that a 'Mama' Beetle has babies, and all of the information about 'how to build a beetle' is copied to her babies...

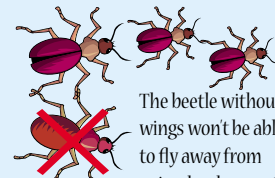


Research taken from Answers in Genesis (www.answersingenesis.org) from the article 'Beetle Bloopers' by Carl Wieland. First published in CREATION June/August 1997

Most of her babies are normal—they have wings, just like her...

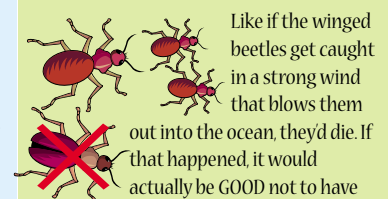
But **ONE** of her babies is **DIFFERENT**, like a **BAD COPY**. Something went **WRONG**, and **THIS** baby beetle **DOESN'T** have any wings! We call this beetle a **'MUTANT'**.

Which Beetle will Survive?



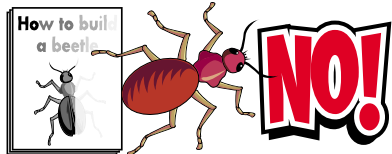
The beetle without wings won't be able to fly away from animals who want to **EAT** her. So, only the beetles who **DO** have wings will live to have more babies with wings, and the wingless beetles will disappear.

But SOMETIMES, the MUTANT Survives...



Like if the winged beetles get caught in a strong wind that blows them out into the ocean, they'd die. If that happened, it would actually be **GOOD** not to have wings, and the **WINGLESS** beetles would survive to have more wingless babies. That's called **'Natural Selection.'**

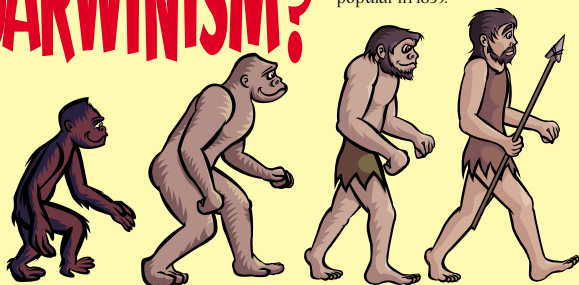
IS THE MUTANT MORE ADVANCED? Just because it survived?



Even if a mutant beetle can sometimes survive better than a normal beetle, it's **STILL** **JUST A BEETLE**. The mutant may be missing parts it should have, or it may even have an extra leg or something, but it's no smarter, no faster, and no better than the original. For instance, a copy machine can't make up or add new instructions to a page about how to build a beetle. It can only work with what's on the page to start with. So, a copy machine can either make copies which are **AS GOOD** as the original, or it can make copies which **AREN'T AS GOOD** (mutants). It **CANNOT** make copies that are **BETTER** than the original. That's how it is with natural selection. Even when a mutant survives, it's **STILL** just a bad copy of the original.

WHAT IS DARWINISM?

Many people believe that all humans **EVOLVED** from the same creatures that apes evolved from. They think that a long series of **MUTATIONS** (as described above) brought about new, more advanced creatures until finally, **PEOPLE** were born. We call that belief **'DARWINISM'**, because a guy named Charles Darwin made this theory popular in 1859.



SORRY, CHARLIE!

The Bible tells us that humans **DIDN'T** evolve like Darwinists think. We were specially **CREATED BY GOD**. But what you may **NOT** know is that real science **ALSO** shows us that Darwinism isn't true! Here's why: **Darwinism is based on faith**. Darwinists love to point out that Bible-believers believe **BY FAITH**. That's true. But Darwinists refuse to consider that the Bible could be true. That's not very scientific of them! They believe **BY FAITH** that the Bible is wrong.

Impossible to prove

Like the Bible, Darwinism is impossible to prove through science, because we cannot go back and watch how humans got on earth, and we can't do experiments to prove how we got here.

Mathematically impossible

Almost. The odds that humans could have evolved like Darwin thought are immeasurably small. On the other hand, the odds that God created us are much, much better.

Darwin himself doubted

To his credit, Darwin admitted that his theory had problems. In one case, he called the idea that the human eye could have evolved 'absurd.'

TRUST THE BIBLE!

Darwinists claim to have proof that we evolved, but their evidence is often missing, misunderstood, or even made-up! But the Bible is trustworthy. Though science can't prove the Bible any more than it can prove Darwinism, God's Word and Darwinism cannot both be true, and the Bible makes much more sense. **Our Almighty God CREATED us. Is that so hard to believe?**

Genesis chapter 1 Psalm 97:6 Job 33:4
 Psalm 19:1 Psalm 139:14-16

Why People Refuse to Believe the Bible...

It's because they don't **WANT** to believe that there's a God they have to answer to!

Romans 1:18-23 2 Timothy 4:3-4
 Colossians 2:8 Hebrews 13:9
 1 Timothy 4:2

